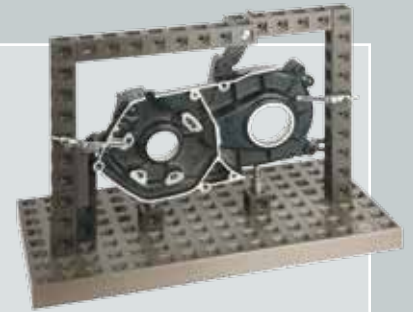




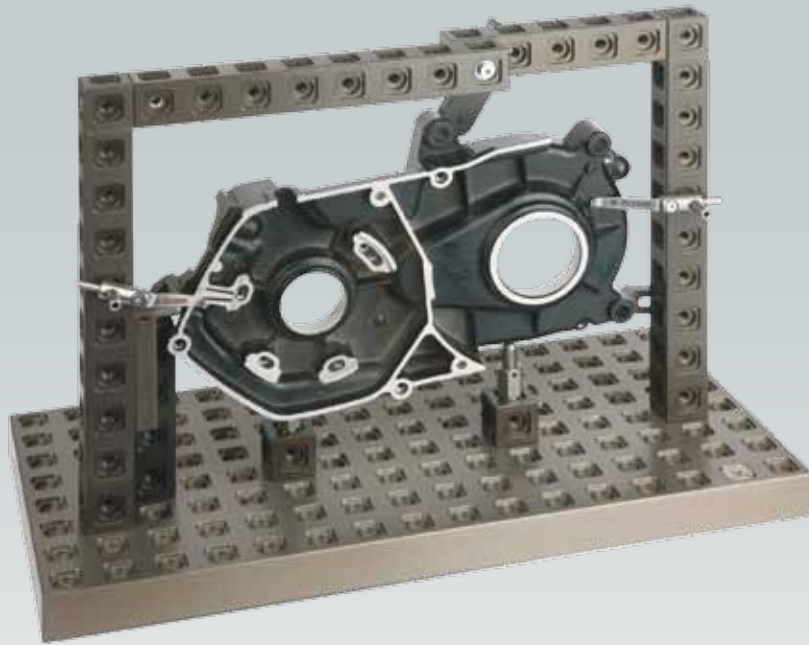
# QUADERFIX

- » Fixturing system for tactile measurement
- » Modular device system constructed from standard quader elements
- » High stability and rigidity
- » Continuous hole patterns at 25 mm intervals
- » Universal and flexible system
- » Compatible with the Spannfix range



	Product group	Product name	Page
Base elements		<b>Base plates</b>	
		Quader base plates	121
		Accessories for base plates	122
Structural elements		<b>Plates and columns</b>	
		Quader plates	123
		Quader columns	124
		Quader connector	124
		Quader reinforcement brackets	125
		Quader mount, rotating	125
		Quader mounting rails, adjustable	126
		Quader X/Y adjustment element	126
		Bushing and adapters	127
		Adjusting nut	127
	M 8 and M 10 extension elements	128	
		<b>Adapter</b>	
		Thread adapter with extension element	129
		Quick-action clamp for Quader	129
		T-slot / Quader adapter	130
		<b>Supports and stop units</b>	
		Quader V-plates	131
		Pairs of Quader V-blocks	131
		Pairs of Quader V-blocks with ridge	132
		Rails for support domes	132
		Mounts for support domes	133
		Support domes	133
		Quader stops	134
Adjustable stop	134		

	Product group	Product name	Page
Clamping elements		<b>Clamping elements</b>	
		Notes on clamping elements	135
Sets		<b>Sets</b>	
		Quaderfix basic sets	136
		Quaderfix expansion set	138
		Quaderfix screwing material sets	139



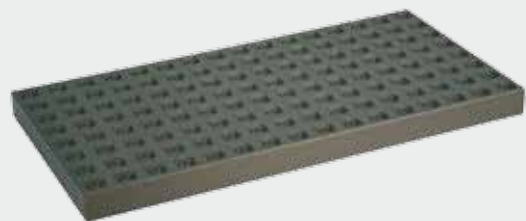
## Quader base plates

### Description

Base plate with square push-fit sockets for anti-twist fixturing of the modular elements and a 25 mm pattern of M 6 connection threads.

### Material

Hardcoated aluminium.



Quad

Order number	Length	Width	Height	Approx. weight (kg)
361700	400	200	25	4.7
362000	500	250	25	7.4
362100	600	300	25	10.7

## + Accessories for base plates

### Quader plate connectors

#### Description

Plate connectors for Quaderfix base plates.

#### Material

Hardcoated aluminium.

Order number	Length	Width	Height	Version
363600	58	25	8	swivelling
363300	100	25	12	rigid



Quad

### Base plate anchoring claws

#### Description

Claws for anchoring Quaderfix base plates.

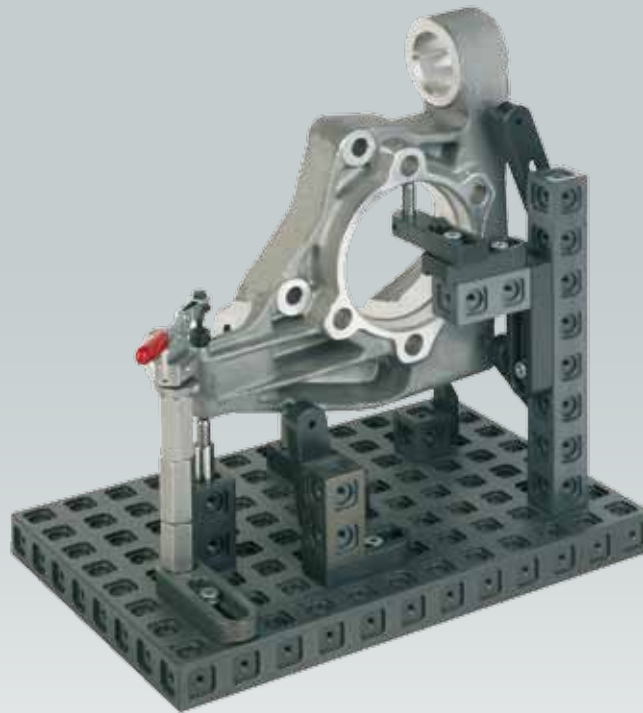
#### Material

Hardcoated aluminium.

Order number	For plate thickness	Thread	Scope of delivery
281406	25	M 6	1 set
281408	25	M 8	1 set
281410	25	M 10	1 set
281412	25	M 12	1 set



M ...



## Quader plates

### Description

Quader plate with 25 mm connection thread pattern.  
 Square push-fit socket for anti-twist fixturing of module elements with M 6 connection threads, M 5 on side faces.

### Material

Hardcoated aluminium.



Quad

Order number	Length	Width	Height	Approx. weight (kg)
360000	50	75	25	0.216
360100	50	100	25	0.288
360200	50	125	25	0.360
360300	50	150	25	0.432
360400	50	200	25	0.575
360500	50	250	25	0.720
360600	50	500	25	1.440
360700	100	100	25	0.575
360800	100	150	25	0.690
360900	100	200	25	1.300
361000	150	150	25	1.510
361100	150	200	25	1.730
361200	150	250	25	2.166
361500	200	200	25	2.400
361600	200	300	25	3.600

## Quader columns

### Description

Quader column with 25 mm connection thread pattern.  
Square push-fit socket for anti-twist fixturing of module elements with M 6 connection threads, M 5 on side faces.

### Material

Hardcoated aluminium.



Quad

Order number	Length	Width	Height	Approx. weight (kg)
364000	25	25	25	0.033
364100	50	25	25	0.067
364200	75	25	25	0.101
364300	100	25	25	0.135
364400	125	25	25	0.168
364500	150	25	25	0.202
364600	200	25	25	0.271
364700	250	25	25	0.340
364800	500	25	25	0.680

## Quader connector

### Description

For joining Quader columns at the sides.

### Material

Hardcoated aluminium / steel.

### Scope of delivery

Includes M 5 fastening screw.



Quad

Order number	Length	Width	Height	Approx. weight (kg)
363200	25	25	25	0.047

## Quader reinforcement bracket

### Description

Square for reinforcement or ease of mounting.  
 Quader columns or V-block elements can be mounted on the base plate from above, using the reinforcement bracket.  
 It is no longer necessary to screw these items on from the underside of the plate.



### Material

Hardcoated aluminium.

Quad

Order number	Length	Width	Height	Approx. weight (kg)
366000	25	25	25	0.037
357000	100	50	25	0.240
357100	150	75	25	0.490

## Quader mount, rotating

### Description

Rotating Quader mount. This allows Quader columns or V-blocks, for instance, to be mounted in a rotated position.



### Material

Hardcoated aluminium.

Quad

Order number	Length	Width	Height	Approx. weight (kg)
366500	25	25	25	0.033

## Quader mounting rails, adjustable

### Description

Adjustable rails for mounting Quader elements or threaded columns.

### Material

Hardcoated aluminium.



Quad

Order number	Length	Width	Height	Adjustment range
357800	83	25	12.5	38
366400	60	25	25	15

## Quader X/Y adjustment element

### Description

X/Y adjustment piece for Quader elements, enabling positioning outside the 25 mm connection thread pattern.

### Material

Hardcoated aluminium.



Quad

Order number	Length	Width	Height	Adjustment range
357500	65	65	25	15

## Bushes and adapters

### Description

Centring plate and centring ring for guiding Quader elements that are to be screwed together. Centring plate secured against rotation.

### Material

Stainless steel.



Quad

Order number	Description
367000	centring plate
367200	centring ring

## Adjusting nut

### Description

Adapter for screwing on Quader elements with M 5 screws.

### Material

Stainless steel.



Quad

Order number	Description
367100	M 5 adjusting nut

## M 8 and M 10 extension elements

### Description

Extension pieces with male thread at the bottom end and female thread at the top end. Width across flats 17 mm.

### Material

Stainless steel.



M 8

M 10

Order number	Male thread	Female thread	Length
304100	M 8	M 8	50
304200	M 8	M 8	100
322200	M 10	M 10	25
322300	M 10	M 10	35
322400	M 10	M 10	50
322500	M 10	M 10	60
304400	M 10	M 10	100
253500	M 10	M 10	150

## Thread adapter with extension element

### Description

Adapters with centring diameter for Quader elements.  
Width across flats 17 mm.

### Material

Stainless steel.



Order number	Connection 1	Connection 2	Length
356000	male M 6	female M 10	39
356100	female M 6	female M 10	30
356200	male M 5	female M 10	39
356300	female M 5	female M 10	30
369100	male M 6	female M 8	28
369200	male M 5	female M 8	28

## Quick-action clamp for Quader

### Description

SWA 39 quick-action clamp for direct anchoring on Quader plates.

### Material

Hardcoated aluminium.

### Scope of delivery

Includes fastening screw.



Order number	Height
362900	21.5

## T-slot / Quader adapter

### Description

Adapter for the mounting of Quader modules on Spannfix T-slot plates.

### Material

Aluminium / steel.

### Scope of delivery

With T-slot block.



Order number	Length	Width	Height	Approx. weight (kg)
366300	50	25	35	0.086

## Quader / M 10 adapter

### Note

Mount for M 10 modules on Quader system.

### Material

Hardcoated aluminium.



Order number	Length	Width	Height	Approx. weight (kg)
364900	25	25	75	0.033

## Quader V-plates

### Description

120° V-plate for Quader. Square push-fit socket for anti-twist fixturing of module elements with M 6 connection threads, M 5 on side faces.

### Material

Hardcoated aluminium.

### Scope of delivery

1 pair.



Quad

Order number	Length	Width	Height	Clamping Ø	Approx. weight (kg)
359400	100	50	25	100	0.270
359500	150	50	25	200	0.360

## Pairs of Quader V-blocks

### Description

Pair of V-blocks. Square push-fit sockets for anti-twist fixturing of module elements with M 6 connection threads, M 5 on underside.

### Material

Hardcoated aluminium.

### Scope of delivery

1 pair.



Quad

Order number	Support point	Length	Width	Height	Approx. weight (kg)
359600	90°	25	25	25	0.039
359700	90°	50	25	25	0.073
359800	120°	25	25	25	0.038
359900	120°	50	25	25	0.072

## Pairs of Quader V-blocks with ridge

### Description

Pair of V-blocks with ridged support. Square push-fit sockets for anti-twist fixturing of module elements with M 6 connection threads, M 5 on underside.

### Material

Hardcoated aluminium.

### Scope of delivery

1 pair.



Quad

Order number	Support point	Length	Width	Height	Approx. weight (kg)
357300	90°	50	25	25	0.070
357400	120°	50	25	25	0.069

## Rails for support domes

### Description

Adjustable rails for support domes.  
Mount Ø 4 mm / width of elongated hole 6 mm.

### Material

Hardcoated aluminium.

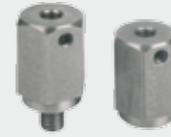


Order number	Length	Width	Height	Adjustment range
357700	72	20	12	25

## Mounts for support domes

### Description

Mount Ø 4 mm for support domes. With connection thread M 5 or M 6.



### Material

Stainless steel.

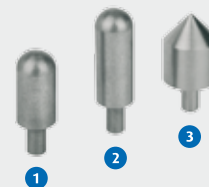
Quad

Order number	Male thread	Female thread	Height
356600	M 5	-	20
356400	M 6	-	20
356700	-	M 5	20
356500	-	M 6	20

## Support domes

### Description

Support domes and centring point for installation in rails and mounts with Ø 4 mm bore.



### Material

Stainless steel.



Order number	Version	Diameter
319300	90° centre point <b>3</b>	12
319400	R 4 x 15 mm support <b>1</b>	8
319500	R 4 x 20 mm support <b>2</b>	8

## Quader stops

### Description

Stop units for Quader. Version as a fixed or adjustable stop with ball support.

### Material

Hardcoated aluminium.



Quad

Order number	Version	Adjustment range
366600	fixed stop <b>1</b>	rail 15 mm
366700	adjustable stop <b>2</b>	rail 15 mm, stop unit 20 mm

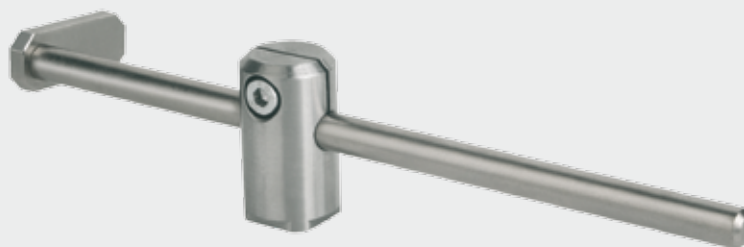
## Adjustable stop

### Description

Adjustable stop for attachment to the side of Quader connection thread M 5. Effective length of the stop unit 150 mm.

### Material

Stainless steel.



Quad

Order number	Length	Width	Height
366800	30	18	18

## Notes on clamping elements

All clamping elements in the Spannfix section can also be used for the Quaderfix system. For instance:

### Spring clamp

Spring clamp (see page 55) fitted on columns (see page 56).



### Horizontal clamp

Horizontal clamp with M 10 connection thread (see page 100), mounted on extension elements (see page 129).



## Quaderfix basic sets

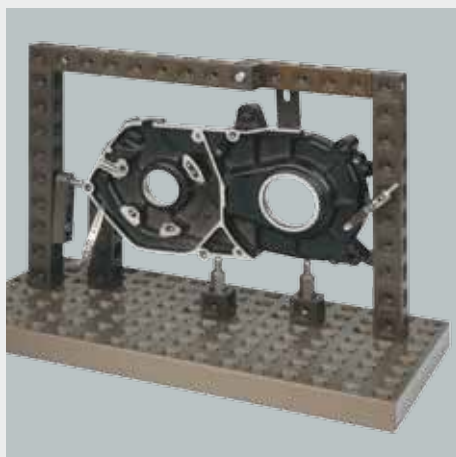
### Description

Set with different Quader elements for mounting medium-sized test parts. The base forms a Quader plate with the dimensions 400 x 200 mm or 600 x 300 mm.



1

*Screwing material not shown*



### Set versions

Order number	Designation	Base plate
369910	Quaderfix basic set "1"	400 x 200
369920	Quaderfix basic set "2" 1	600 x 300

## Quaderfix basic sets (continued)

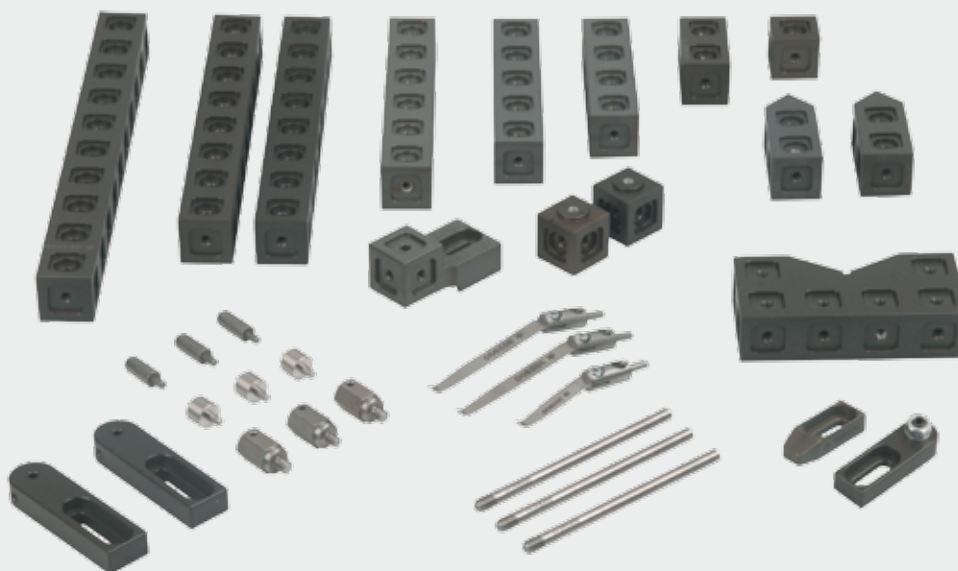
### Set contents

Order number	Designation	Set "1"	Set "2"
361700	Quader base plate, 400 x 200 mm	1	-
362100	Quader base plate, 600 x 300 mm	-	1
364700	Quader column, 250 mm	2	2
364500	Quader column, 150 mm	2	2
364300	Quader column, 100 mm	2	2
364100	Quader column, 50 mm	2	2
364000	Quader column, 25 mm	2	2
366500	Quader mount, rotating	1	1
366400	Quader mount, adjustable	1	1
366700	Quader stop unit, adjustable	2	2
366600	Quader stop unit, fixed	1	1
368200	Column for 50 mm spring clamp	3	3
368300	Column for 75 mm spring clamp	3	3
302800	50 mm spring clamp	3	3
356600	M 5 mount for support domes	2	2
356400	M 6 mount for support domes	1	1
319400	R 4 x 15 mm support dome	3	3
369800	Quaderfix screwing material set "1"	1	1

## Quaderfix expansion set

### Description

Expansion set with further Quaderfix modules for assembling more complex fixturing devices.



### Set version

Order number	Designation
369930	Quaderfix expansion set

### Set contents

Order number	Designation	Quantity
364700	Quader column, 250 mm	1
364600	Quader column, 200 mm	2
364500	Quader column, 150 mm	1
364400	Quader column, 125 mm	1
364300	Quader column, 100 mm	1
364100	Quader column, 50 mm	1
364000	Quader column, 25 mm	1
366500	Quader mount, rotating	2
366400	Quader mount, adjustable	1
366700	Quader stop unit, adjustable	1
366600	Quader stop unit, fixed	1
359700	Pair of 90° Quader V-blocks, 50 mm	1
359400	Pair of 120° Quader V-blocks, 100 mm	1
368400	Column for 100 mm spring clamp	3
302800	50 mm spring clamp	1
302900	75 mm spring clamp	2
356600	M 5 mount for support domes	1
356400	M 6 mount for support domes	2
357700	Rail for support dome	2
319500	R 4 x 25 mm support dome	3
319300	90° centre point for support dome	3

## Quaderfix screwing material sets

### Description

Screwing material for Quaderfix in practical assortment boxes. Consisting, among other items, of bushing, adapters and clamping screws of various lengths, for mounting individual Quader elements. Two set versions available.



### Set versions

Order number	Designation
369800	Quaderfix screwing material set "1" <sup>1</sup>
369900	Quaderfix screwing material set "2"

### Set contents

Order number	Designation	Set "1"	Set "2"
367000	Centring plate	10	20
367100	M 5 threaded bushing	5	10
367200	Centring ring	5	10
369100	Thread adapter – male M 6 / female M 8	-	2
369200	Thread adapter – male M 5 / female M 8	-	1
	Screws M 5 x 14	-	20
	Screws M 5 x 16	10	20
	Screws M 5 x 30	10	20
	Screws M 5 x 45	5	20
	Screws M 6 x 12	10	20
	Screws M 6 x 16	10	20
	Screws M 6 x 20	10	20
	Screws M 6 x 25	10	20
	Washers	20	20
	Disc for Quader	20	20
	Right-angle screwdriver SW 2.5	-	1
	Pin screwdriver 3 mm	-	1
	Pin screwdriver 4 mm	-	1

