

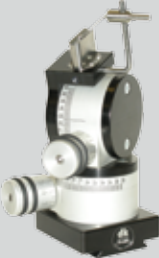


MEASURING INSTRUMENTS AND ACCESSORIES

» Dial gauges, squares, V-blocks, magnet stands, etc.



Product group	Product name	Page
  	Dial gauges	
	Dial gauges	202
	Electronic dial gauges	202
	Precision dial indicators	203
	Electronic dial gauges with combined digital display/scale	203
	Dial gauge inserts	204
	Lever gauges	205
	Inserts for lever dial gauges	205
	Dial gauge stands	
	Dial gauge stands (model MU "Standard")	206
	Dial gauge stands (model SU "Small")	207
	Squares, V-blocks and accessories	
	Angle finder	208
	Reference squares	208
	Bevelled squares without stop	209
	Bevelled squares with stop	209
	Pairs of V-blocks	210
	Pairs of four-way V-blocks	210
	Pairs of two-way V-blocks with clamping bracket	211
	Four-way hexagon socket spanner	211

Dial gauges

Description

Precision dial indicator with a housing diameter of 58 mm. Exchangeable M 2.5 feeler tips and Ø 8 mm clamping shaft. DIN 878 accuracy.

Scope of delivery

Includes plastic case.

Accessories

Dial gauge inserts.

↳ Inserts see page 204.



Order number	Measuring range	Scale division	Version	Model	Approx. weight (kg)
520810	10 mm	0.01 mm	-	Käfer MU 52 T	0.20
520820	10 mm	0.01 mm	Premium version with extra-long service life	Käfer M 2 T	0.18
520830	10 mm	0.01 mm	with anti-shock protection	Käfer M2 SN	0.18

Electronic dial gauges

Description

Electronic dial gauge with a housing diameter of 58 mm. Exchangeable M 2.5 feeler tips and Ø 8 mm clamping shaft. LCD. The dial gauge features a variable RS 232, Digimatic or USB data interface. Zero-point setting possible in any position. With reversible dial reading, mm/inch toggle switch and measured value preset. Protection class IP 51 in accordance with IEC 529.

Scope of delivery

Includes plastic case.

Accessories

Cable for USB (510291)

Cable for RS 232 (510292)



Order number	Measuring range	Scale division	Version	Model	Approx. weight (kg)
520710	12.5 mm / 0.5 inch	0.01 mm / 0.0005 inch	0.025 mm	Helios DIGI-MET® 1722	0.24
520720	12.5 mm / 0.5 inch	0.005 mm / 0.0001 inch	0.015 mm	Helios DIGI- MET® 1723	0.24
520730	12.5 mm / 0.5 inch	0.001 mm / 0.00005 inch	0.005 mm	Helios DIGI- MET® 1724	0.24

Precision dial indicator

Description

Precision dial indicator with a housing diameter of 62 mm. Exchangeable M 2.5 feeler tips and Ø 8 mm clamping shaft. With spindle release and anti-shock protection. DIN 879-1 accuracy.

Scope of delivery

Includes plastic case.

Accessories

Inserts.

↳ Inserts see page 204.



Order number	Measuring range	Scale division	Numbering	Version	Model	Approx. weight (kg)
520950	0.1 mm	0.001 mm	50-0-50	-	Käfer Complica 1001	0.3
520960	0.1 mm	0.001 mm	50-0-50	water proof	Käfer Complica 1001 wa	0.3

Electronic dial gauges with combined digital display/scale

Description

Electronic dial gauge with a housing diameter of 58 mm. Exchangeable M 2.5 feeler tips and Ø 8 mm clamping shaft. 8.5 mm LCD with tall digits. 280° swivelling display screen and accuracy to company standard. The dial gauge features a variable USB, RS 232 or Digimatic data interface. Zero-point setting possible in any position. With reversible dial reading, mm/inch toggle switch and measured value preset. Protection class IP 42.

Scope of delivery

Includes plastic case.

Accessories

Cable for USB (510291)

Cable for RS 232 (510292)

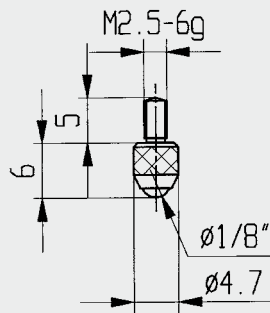


Order number	Measuring range	Graduation	Accuracy	Model	Approx. weight (kg)
520610	12.5 mm / 0.5 inch	0.01 mm / 0.0005 inch	0.005 mm	Helios DIGI-MET® 1734	0.27
520620	25.0 mm / 1.0 inch	0.001 mm / 0.00005 inch	0.005 mm	Helios DIGI-MET® 1734	0.27

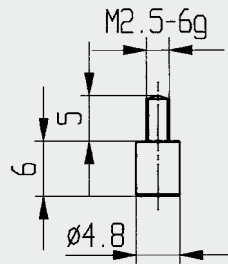
Dial gauge inserts

Description

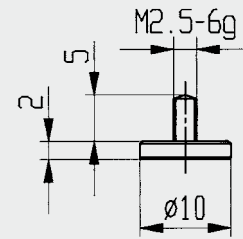
Dial gauge inserts. M 2.5 connection thread.



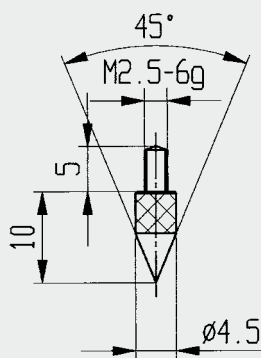
(I)



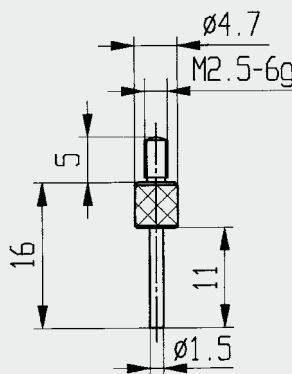
(II)



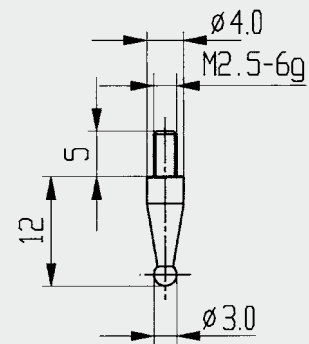
(III)



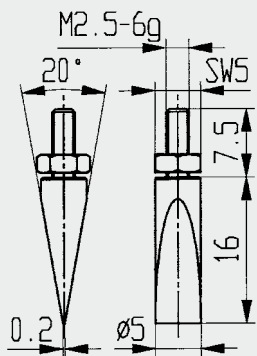
(IV)



(V)



(VI)



(VII)

Order number	Version	Fig.
520501	Spherical insert, L = 6 mm	I
520502	Flat, Ø 4.8 mm	II
520503	Flat, Ø 10 mm	III
520504	45° point	IV
520505	Pin length 11 mm, Ø 1.5 mm	V
520506	Spherical insert, Ø 3 mm	VI
520507	Knife-shaped, with adjustment nut	VII

Lever gauges

Description

Lever dial gauge with a housing diameter of 32 mm.
Shockproof thanks to integrated slip coupling.
Standard version features inserts with hard-metal
Ø 2 mm ball. Length of insert 12 mm. DIN 2270 accuracy.

Scope of delivery

Includes plastic case.

Accessories

Inserts for lever dial gauges.

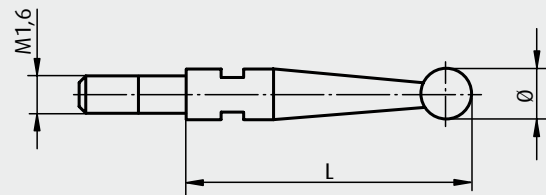


Order number	Measuring range	Scale division	Numbering	Model	Approx. weight (kg)
520910	0.8	0.01	0-40-0	Käfer K 30	0.13
520920	0.2	0.002	0-100-0	Käfer K 36	0.13

Inserts for lever dial gauges

Description

Inserts for lever dial gauges.
M 1.6 connection thread.



Order number	Ball material	Ball Ø	Length (L)
520521	Hard metal	2	12.8
520522	Hard metal	1	12.3
520523	Ruby	2	12.8

Dial gauge stands (model MU "Standard")

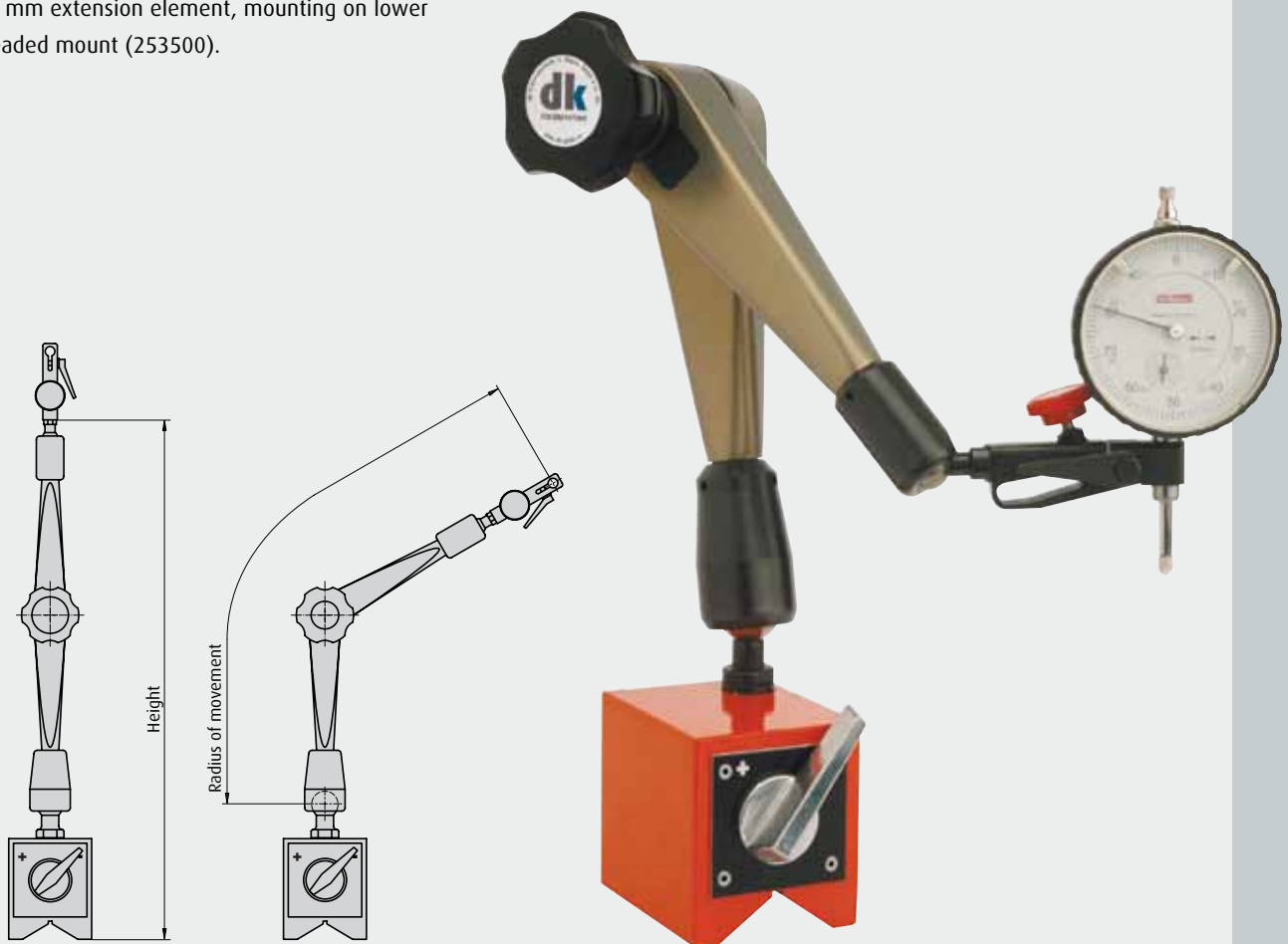
Description

Magnetic stand mechanically locked by a central clamping screw. The lower articulated arm is clamped first, followed by the upper arm and the dial gauge holder. Optional joint sleeves available for use in heavily dusty environments. Choice of play-free, patented dial gauge holder: DGH3 or DGH4. Switchable magnet with a magnetic force of 900 N.

Accessories

Anti-loss protection for dial gauge holders DGH 3 and DGH 4 (254010)

150 mm extension element, mounting on lower threaded mount (253500).



Order number	Radius of movement	Height	Dial gauge holder	Extra dust protection	Designation
250100	345	430	DGH 1	-	MU/F-DGH1
250110	345	430	DGH 1	incl.	MU/FG-DGH1
250000	345	430	DGH 3	-	MU/F-DGH3
254400	345	430	DGH 3	incl.	MU/FG-DGH3
254200	345	430	DGH 4	-	MU/F-DGH4
254500	345	430	DGH 4	incl.	MU/FG-DGH4

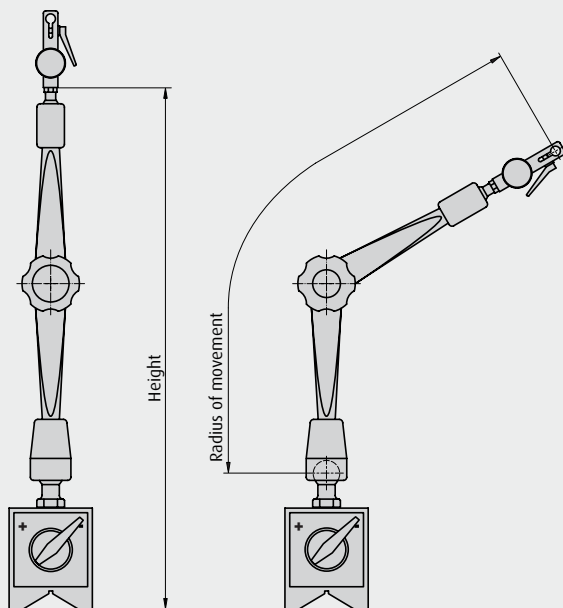
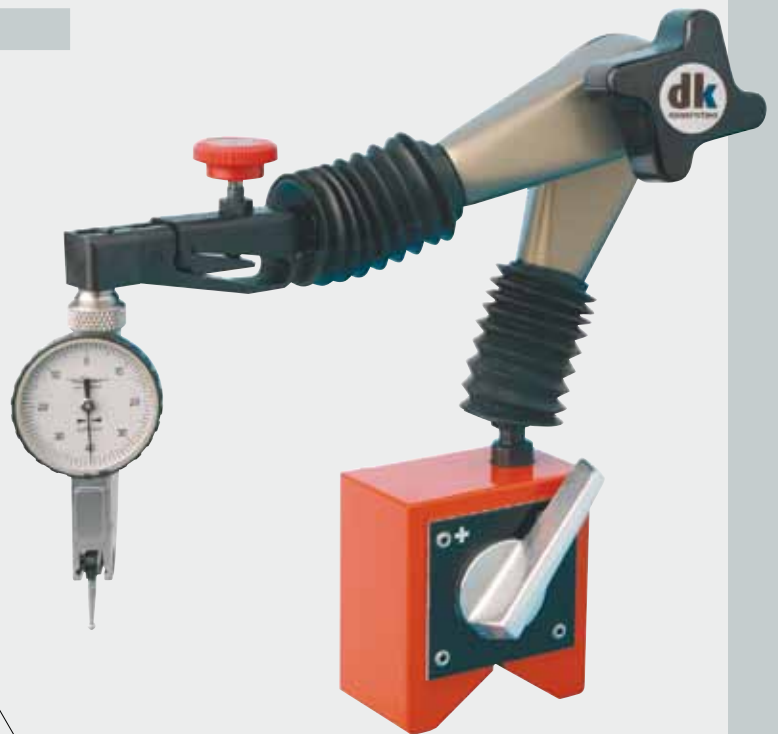
Dial gauge stands (model SU "Small")

Description

Magnetic stand mechanically locked by a central clamping screw. The lower articulated arm is clamped first, followed by the upper arm and the dial gauge holder. Includes joint sleeves for use in heavily dusty environments. Choice of play-free, patented dial gauge holder: DGH3 or DGH4. Switchable magnet with a magnetic force of 500 N.

Accessories

Anti-loss protection for dial gauge holders DGH 3 and DGH 4 (254010)



Order number	Radius of movement	Height	Dial gauge holder	Extra dust protection	Designation
254700	225	300	DGH 3	incl.	SU/FG-DGH3
254800	225	300	DGH 4	incl.	SU/FG-DGH4

Angle finder

Description

For precise angular adjustment of electronic measuring probes on coordinate measuring machines. Rotates through 360° around the rotary axis and from +95° to -60° around the pivot axis. Pivoting is driven by a worm gear. Angular adjustment on a precise 2° scale.

Scope of delivery

Includes column and spring clamp.



SWA 39

Order number	V-block length for probe	Clamping diameter	Height	Approx. weight (kg)
314955	10	0.8–3.0	135	0.890
314965	25	0.8–3.0	135	0.900

Reference squares

Description

Hardened reference square with or without stop.
Accuracy GG 0. DIN 875.

Material

Stainless steel.



Order number	Stop	Side length	Cross-section	Approx. weight (kg)
530710	with	50 x 40	15 x 4	0.05
530711	with	75 x 50	15 x 4	0.08
530712	with	100 x 70	20 x 5	0.20
530713	with	150 x 100	30 x 6	0.46
530714	with	200 x 130	30 x 7	0.75
530715	with	300 x 200	40 x 8	1.68
530720	without	50 x 40	15 x 4	0.04
530721	without	75 x 50	15 x 4	0.05
530722	without	100 x 70	20 x 5	0.11
530723	without	150 x 100	30 x 6	0.22
530724	without	200 x 130	30 x 7	0.54
530725	without	300 x 200	40 x 8	1.12

Bevelled squares without stop

Description

Hardened bevelled square without stop.
Accuracy GG 00. DIN 875.

Material

Stainless steel.



Order number	Side length	Cross-section	Approx. weight (kg)
530730	50 x 40	14 x 4.5	0.03
530731	75 x 50	16 x 4	0.05
530732	100 x 70	20 x 5	0.10
530733	150 x 100	28 x 6	0.26
530734	200 x 130	30 x 7	0.43
530735	300 x 200	40 x 8	0.96

Bevelled squares with stop

Description

Hardened bevelled square with one thick and one thin side.
Accuracy GG 00. DIN 875.

Material

Stainless steel.



Order number	Side length	Thick side	Thin side	Approx. weight (kg)
530740	50 x 40	14 x 10	16 x 2	0.05
530741	75 x 50	14 x 10	18 x 2	0.06
530742	100 x 70	16 x 10	18 x 2	0.13
530743	150 x 100	20 x 12	22 x 2	0.32
530744	200 x 130	24 x 14	26 x 3	0.65
530745	300 x 200	30 x 18	32 x 3	1.60

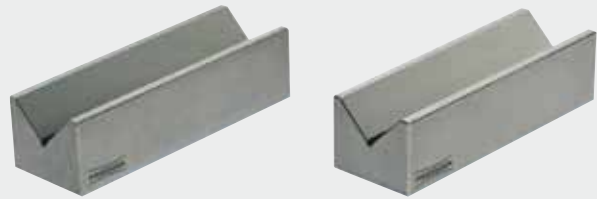
Pairs of V-blocks

Description

Pair of 90° V-blocks. Grade 0, parallelism tolerance < 0.008 mm. V-blocks and bases are precision-ground and machined in pairs.

Material

Special cast iron.



Order number	Dimensions	For shaft Ø	Approx. weight (kg)
530810	100 x 40 x 30	6-40	2.00

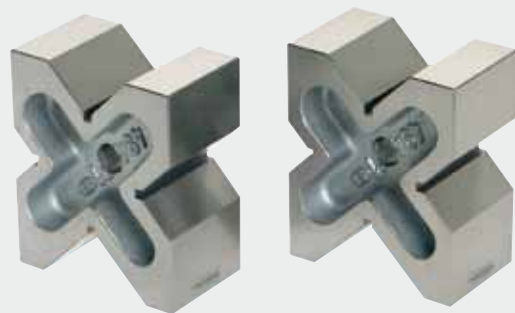
Pairs of four-way V-blocks

Description

Pair of V-blocks with four differently sized 90° vees. Grade 0, parallelism tolerance < 0.008 mm. V-blocks and bases are precision-ground.

Material

Special cast iron.



Order number	Dimensions	For shaft Ø	Approx. weight (kg)
530850	60 x 120 x 100	8-90	6.00

Pairs of two-way V-blocks with clamping bracket

Description

Pair of double V-blocks with clamping brackets, machined in pairs. Two 90° vees. Angled side, end and standing surfaces. Flatness, parallelism and perpendicularity tolerances 0.004 mm.

Material

Hardened special steel.



Order number	Dimensions	For shaft Ø	Approx. weight (kg)
530910	50 x 40 x 40	5-30	1.10
530920	75 x 55 x 55	5-50	2.75
530930	100 x 75 x 75	7-70	6.37

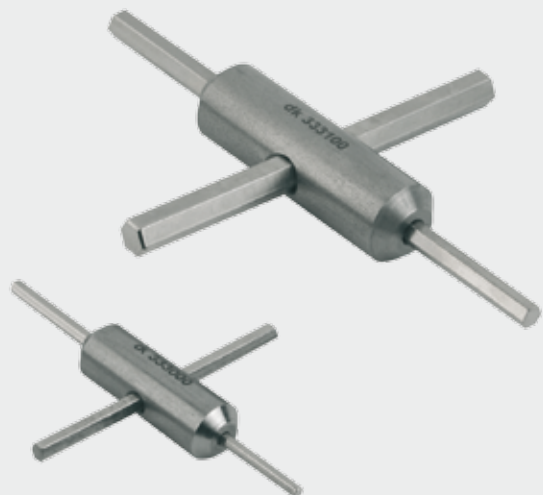
Four-way hexagon socket spanner

Description

Practical and compact four-way design featuring three spanner sizes per tool. Covers each and every hexagon socket size used in the Spannfix and Schienenfix ranges.

Material

Steel.



Order number	Size
333000	WAF 2.0 / WAF 2.5 / WAF 3.0
333100	WAF 4.0 / WAF 5.0 / WAF 6.0

